

**KATHERINE WETZEL** (photographs)  
**ELIZABETH KING** (sculpture)

*Attention's Loop*, 1997

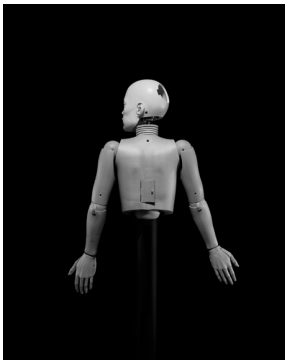
Sequence of 11 black-and-white gelatin silver prints  
Edition of 10, with 4 artist's proofs



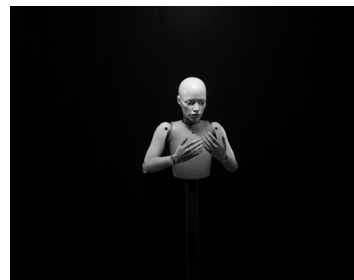
*Pupil: pose 1*  
14 x 11 inches



*Pupil: pose 2*  
20 x 16 inches



*Pupil: pose 3*  
20 x 16 inches



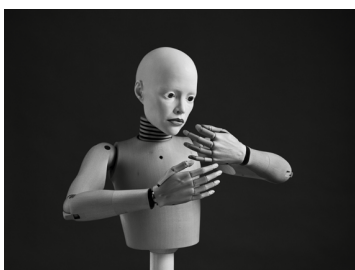
*Pupil: pose 4*  
16 x 20 inches



*Pupil: pose 5*  
14 x 11 inches



*Pupil: pose 6*  
16 x 20 inches



*Pupil: pose 7*  
16 x 20 inches

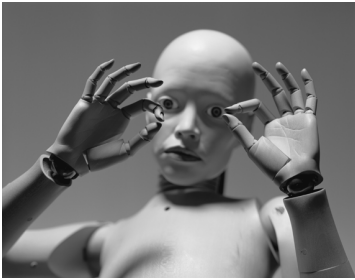


*Pupil: pose 8*  
20 x 16 inches

**KATHERINE WETZEL** (photographs)  
**ELIZABETH KING** (sculpture)

*Attention's Loop*, 1997

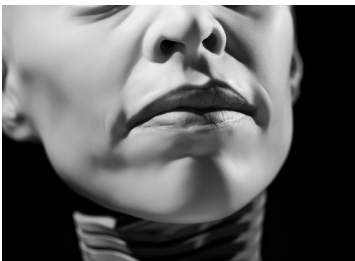
Sequence of 11 black-and-white gelatin silver prints  
Edition of 10, with 4 artist's proofs



*Pupil*: pose 9  
16 x 20 inches



Untitled sculpture: pose 10  
20 x 16 inches



Untitled sculpture: pose 11  
16 x 20 inches

Sculpture: Elizabeth King

*Pupil*, 1987-90

Porcelain, glass eyes, carved wood (Swiss pear), brass  
Half life-size; all joints are movable

Untitled, 1994-97

Porcelain, glass eyes, carved wood, metals, eyelashes  
Half life-size; all joints are movable