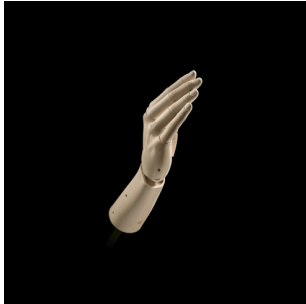


ELIZABETH KING

Bartlett's Hand: 14 Poses, 2008

Chromogenic prints on Kodak Ultra Endura paper
Sequence of 14 images in color, 17 x 17 inches each
Edition of 10, with 4 artist's proofs



Pose 1



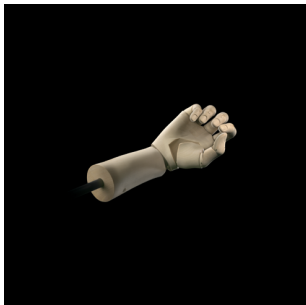
Pose 2



Pose 3



Pose 4



Pose 5



Pose 6



Pose 7



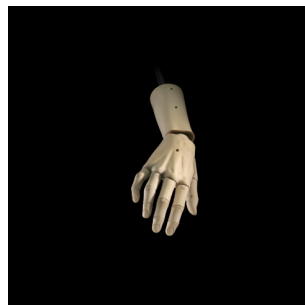
Pose 8



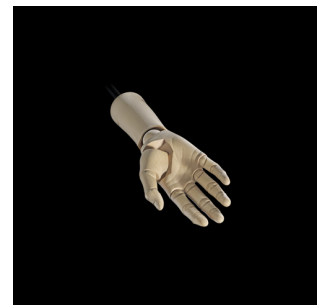
Pose 9



Pose 10



Pose 11



Pose 12

Sculpture: Elizabeth King
Bartlett's Hand, 2005
Carved and turned English boxwood
Half life-size (6 x 2 x 2 inches)
All joints are movable
Poses and composition: Elizabeth King
Lighting and camera: Lynton Gardiner
Master Printer: Esteban Mauchi



Pose 13



Pose 14